



Barr Engineering Company
4700 West 77th Street • Minneapolis, MN 55435-4803
Phone: 952-832-2600 • Fax: 952-832-2601 • www.barr.com *An EEO Employer*

Minneapolis, MN • Hibbing, MN • Duluth, MN • Ann Arbor, MI • Jefferson City, MO • Bismarck, ND

Memorandum

To: Bassett Creek Watershed Management Commission
From: Barr Engineering Company
Subject: Item 5A – Golden Valley Country Club Pond Dredging/Creek Stabilization: Golden Valley BCWMC January 21, 2010 Meeting Agenda
Date: January 12, 2010
Project: 23/27 051 2009 003

5A. Golden Valley Country Club Pond Dredging/Creek Stabilization: Golden Valley

Summary

Proposed Work: Pond dredging and creek stabilization

Basis for Commission Review: Work below floodplain

Change in Impervious Surface: Not applicable

Recommendation: Conditional approval

General Background & Comments

A request was received by City of Golden Valley for review of a concept plan for the above-referenced project. The City of Golden Valley has requested use of Channel Maintenance funds (up to \$100,000) for the bank stabilization portion of the project. The project includes excavation of 2,800 cubic yards of sediment that has accumulated within the pond and stabilizing 100 feet of the stream bank along the Main Stem of Bassett Creek in the vicinity of the pond. Proposed improvements also include a vegetated buffer strip along the easterly side of the pond.

Floodplain

The existing 100-year flood elevation of Bassett Creek is approximately 874.0 at the project site (Bassett Creek Watershed Management Plan).

Wetlands

The City of Golden Valley is the Local Government Unit (LGU) responsible for review of the project for conformance to the MN Wetland Conservation Act. The City will issue a No-Loss decision to the Technical Evaluation Committee.

Stormwater Management

A city storm sewer discharges to the pond. The project will remove accumulated sediment in the stormwater pond. The pond discharges directly to the Main Stem of Bassett Creek.

Water Quality Management

The pond dredging and streambank stabilization will improve the water quality of Bassett Creek by reducing erosion and increasing the dead storage of the existing pond.

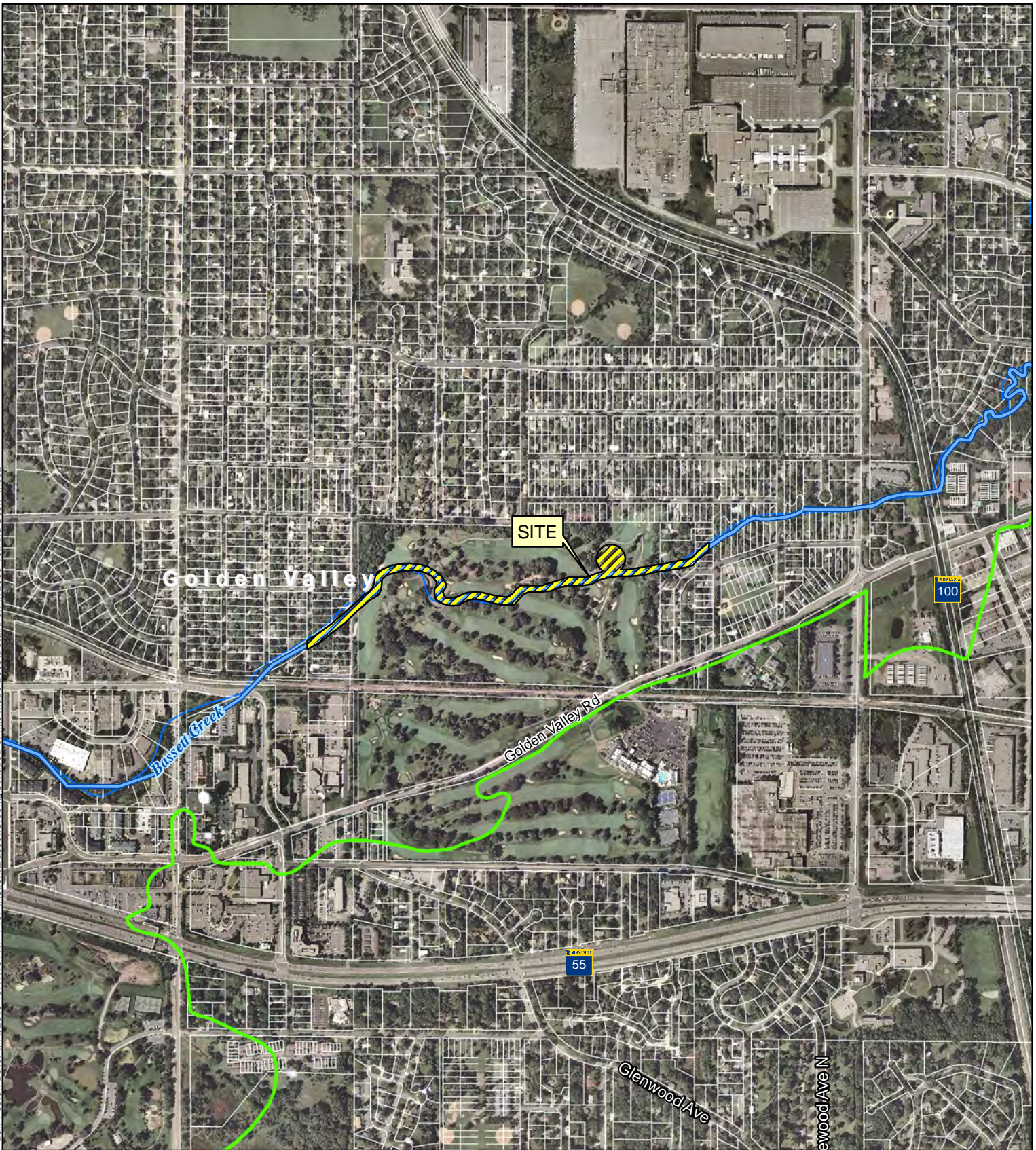
Erosion and Sediment Control

Temporary erosion control features include silt fence, biorolls, ditch checks, and inlet protection.








Recommendation

Conditional approval based on following comments:

- a. Installation details and locations of temporary BMPs identified in narrative must be shown on the drawings.
- b. Dredge spoils must be disposed above the 100-year flood elevation (approx 874.0 at the project site).
- c. Applicant shall clarify how proposed berm along Bassett Creek will be stabilized.
- d. Contractor shall minimize disturbance of creek channel during construction.

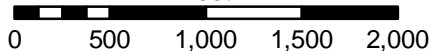


Imagery Source: Aerials Express, 2009

-  Permit Location
-  Bassett Creek
-  WMC Boundary
-  Major Subwatershed
-  Municipality
-  Parcel Line
-  Stream



Feet



**LOCATION MAP
APPLICATION 2009-10
GVCC Pond Dredging/
Creek Stabilization
Golden Valley, MN**