



January 8, 2014

*Reply to St. Paul*

Bassett Creek Watershed Management Commission  
16145 Hillcrest Lane  
Eden Prairie, MN 55346

Re: Donation of an educational sign at Sweeney Lake

Dear Bassett Creek Watershed Management Commission:

I am writing this letter on behalf of our client, who wishes to remain anonymous. Our client wishes to donate, design, with input and approval from the commission, fabricate and install an educational sign near the Sweeney Lake boat/canoe launch on Island Drive within the Hidden Lakes 2<sup>nd</sup> Addition PUD No. 74, Golden Valley, Minnesota.

Our client has generously offered to pay for the educational sign as she resides near the lake and has genuine concerns for the quality of the lake water.

Our client would like to post a Public Notice sign notifying the public of the Minnesota Impaired Water status and conveying the following messages (I believe I found this list on your website.)

1. **FERTILIZE SMART** – Make sure your fertilizer is phosphorus-free. Sweep up fertilizer that spills onto hard surfaces.
2. **GRASS, DON'T BLOW IT OFF** – Blow or rake grass clippings and leaves out of the street. Leave them on your lawn, use them for compost, or bag them up.
3. **USE YOUR RUNOFF** – Direct your downspouts onto your lawn or garden or into a rain barrel.
4. **SCOOP THE POOP** – Grab a bag when you grab the leash, and pick up after your pets.
5. **USE CHEMICALS WISELY** – Use chemical products according to label directions. Consider alternative or natural remedies to control weeds and pests.
6. **KEEP A HEALTHY LAWN** – Aerate your lawn, seed bare patches and mow at a higher setting.
7. **PLANT A RAIN GARDEN** – Capture, clean and infiltrate rainwater that would otherwise run off your property.
8. **REPLACE TURF WITH NATIVE PLANTS** – Swap some of your high-maintenance lawn for low-maintenance native ground cover, plants or grasses.
9. **REDUCE YOUR FOOTPRINT** – Replace some pavement – such as a walk, patio, or driveway – with pavers or pervious pavement.

10. **ADOPT A STORM DRAIN** – Keep neighborhood storm drains free of leaves, seeds and grass clippings.

We would also like to include the information below pertaining to blue-green algae and harmful algal blooms found on the Minnesota Pollution Control Agency website.

**Summertime in Minnesota: When in doubt, best keep out!**

When temperatures climb and the summer sun beats down, conditions are ripe for Minnesota lakes to produce harmful algae blooms, some of which can be harmful to pets and humans.

**What:** Harmful algal blooms (HAB) are blue-green (cyanobacterial) algal blooms containing toxins or other noxious chemicals, which can pose harmful health risks.

**Why is this a concern?** People or animals may develop skin irritation or upper respiratory problems from exposure to HAB, and in extreme cases, dogs and other animals have even died after drinking lake water containing these toxins.

**Where:** Severe blue-green algal blooms typically occur on lakes with poor water quality (high in nutrients), and look like green paint, pea soup, or a thick green cake. HAB often result in extremely low water clarity (less than 1 foot). There is no visual way to predict the toxicity of an algal bloom.

**What should I do if I suspect a HAB on my lake?** When these conditions are present, people should avoid contact with the water and they should prevent animals from swimming in or drinking the water. Scientists do not yet know what causes some blooms to produce toxins while others do not, so the safest course of action is to avoid contact with all blue-green blooms.

**What does it look like?** Blue-green algae can be hard to distinguish from other types of algae. While it's often described as looking like pea soup or spilled green paint, it can take other forms as well.

Images of several signs by Dogtooth Designs with similar messages is attached. Our client would like something similar designed for Sweeney Lake. We would like to get the Commission input on the sign and work with Administrator Jester to bring a draft design to a future Commission meeting.

Please include this letter on the January agenda.

Sincerely,



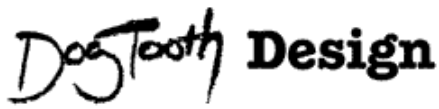
Sherri Weiss

Paralegal

[sweiss@murnane.com](mailto:sweiss@murnane.com)

SW/cs/1799770

Enclosures



Graphic Arts / Interpretive Media

[x Home](#) [x FAQ](#) [x Contact](#)

© DogTooth Design 2011

## Gallery >

Interpretive Signs ...

Examples of signage used in interpretation, wayfinding and identification.



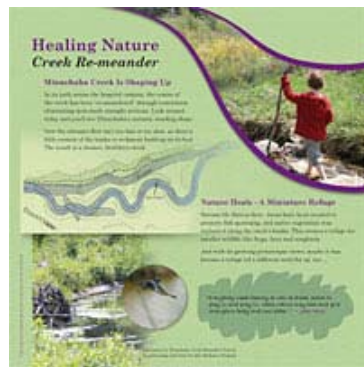
Keller Golf Course, Ramsey County  
« [Shoreline restoration](#) »



City of Edina  
« [Historic mill site](#) »



Cedar Creek Ecosystem Science Reserve  
« [Native forest ecosystem](#) »



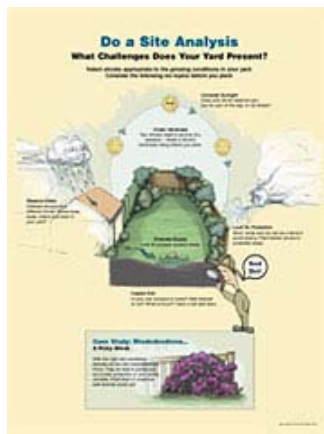
Minnehaha Creek Watershed District  
« [Re-meander of creek](#) »



Ramsey-Washington Watershed District  
« [Site stormwater management](#) »



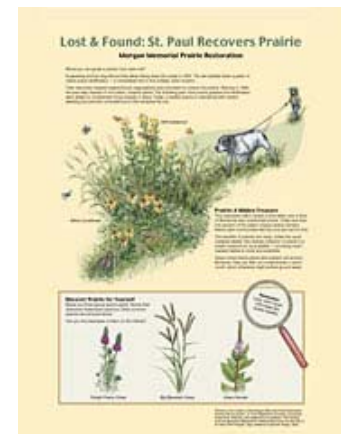
River Keepers  
« [Erosion control](#) »



Minnesota Landscape Arboretum  
« [Landscape design](#) »



City of Lakeville  
« [Native planting marker](#) »



City of St. Paul  
« [Prairie restoration](#) »