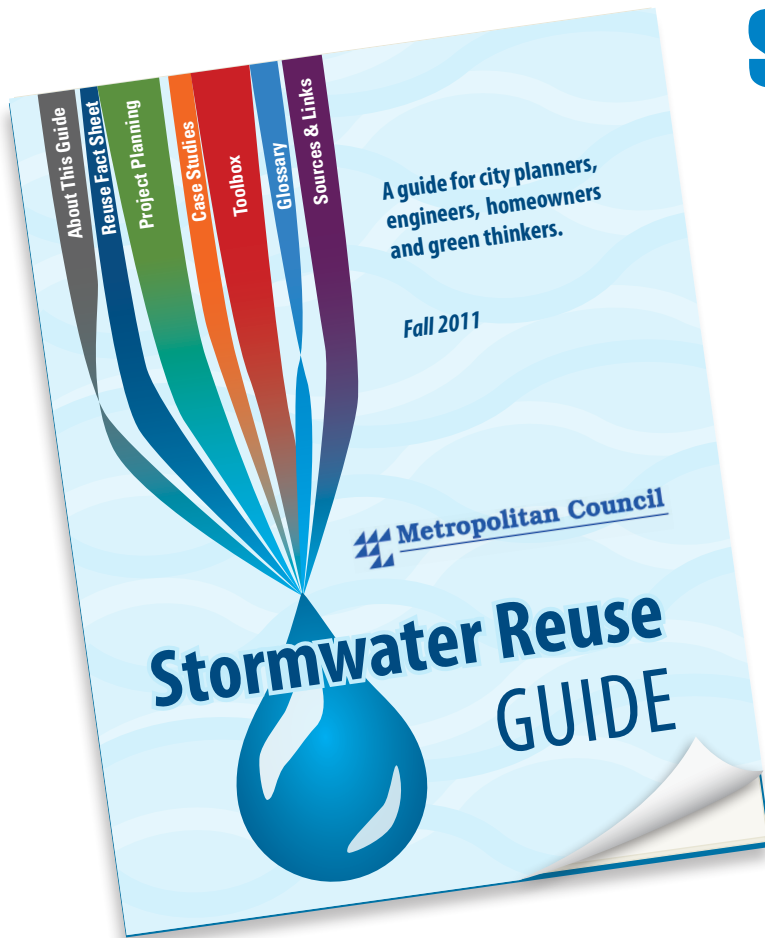


Stormwater Reuse WORKSHOPS



The Stormwater Reuse Guide, created by the Metropolitan Council, is a tool to introduce stormwater reuse to communities in the Twin Cities Metropolitan region. These workshops are aimed at planning and implementing a stormwater reuse project using tools contained in the Stormwater Reuse Guide.

The **first workshop** will provide an introduction to the Guide, and cover planning and feasibility of stormwater reuse. The **second workshop** will focus on implementation, and the **third workshop** will consist of a tour of various stormwater reuse facilities in the metro area.

Attendees are welcome to join one, two, or all three workshops.

WHO SHOULD ATTEND

City planners, engineers, home owners, and green thinkers who are interested in the beneficial reuse of stormwater runoff.

REGISTRATION INFORMATION

There is no cost to register, but space is limited. Reserve your spot by registering prior to May 29th at www.regonline.com/StormwaterReuse

FOR MORE INFORMATION

Contact Brian Davis at 651-602-1519, or via email at Brian.Davis@metc.state.mn.us

DOWNLOAD THE GUIDE AT

www.metrocouncil.org/Wastewater-Water/Planning/Water-Supply-Planning.aspx

Workshop I – Planning
WEDNESDAY, JUNE 5, 2013 | City of Blaine

Workshop II – Implementation
TUESDAY, JUNE 11, 2013 | City of Minnetonka

Workshop III – Tour
WEDNESDAY, JUNE 26, 2013 | City of St. Anthony Village

8:00 a.m. to noon
(registration begins at 7:45 a.m.)

DEVELOPED WITH PARTICIPATION FROM

The Metropolitan Council; CDM Smith, Inc.; the Clean Water Land and Legacy Fund; and University of Minnesota Extension

