

Bassett Creek Watershed Management Plan 2026-2035



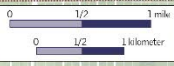
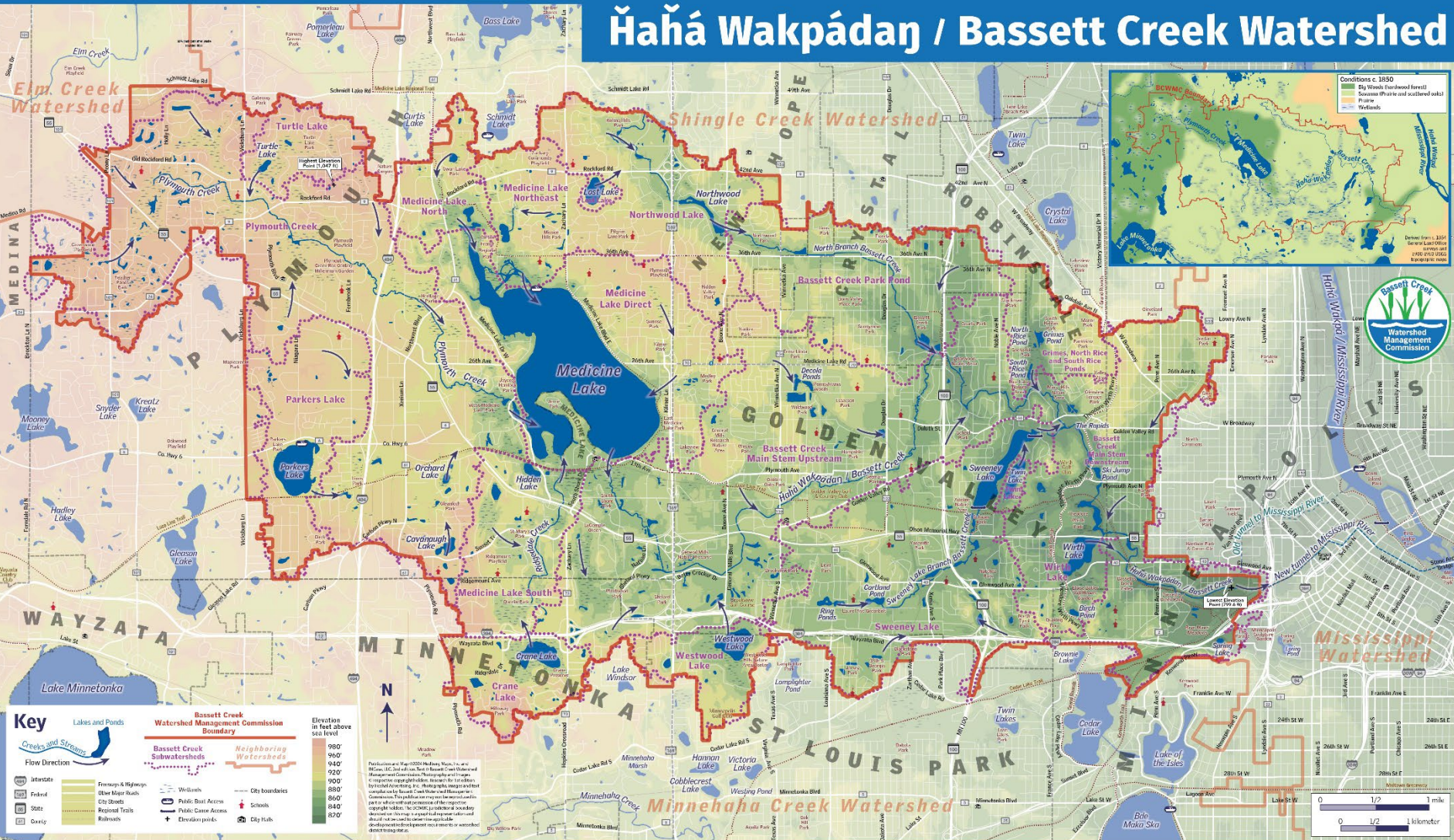
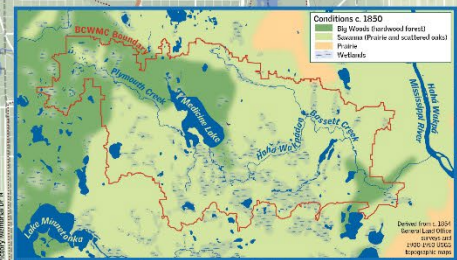
*Stewardship of the ǾaǾá Wakpádaŋ / Bassett Creek Watershed
to improve ecosystem health and reduce flood risk.*

Bassett Creek Watershed Management Commission

- Formed in 1969
- 40 square miles
- 10 priority lakes
- 4 priority streams
- 9 cities
 - Crystal
 - Golden Valley
 - Medicine Lake
 - Minneapolis
 - Minnetonka
 - New Hope
 - Plymouth
 - Robbinsdale
 - St. Louis Park



Ĥaĥá Wakpádaŋ / Bassett Creek Watershed



Bassett Creek Tunnels



Historic Flooding 1950s and 1960s



Third Ave. Tunnel 1990

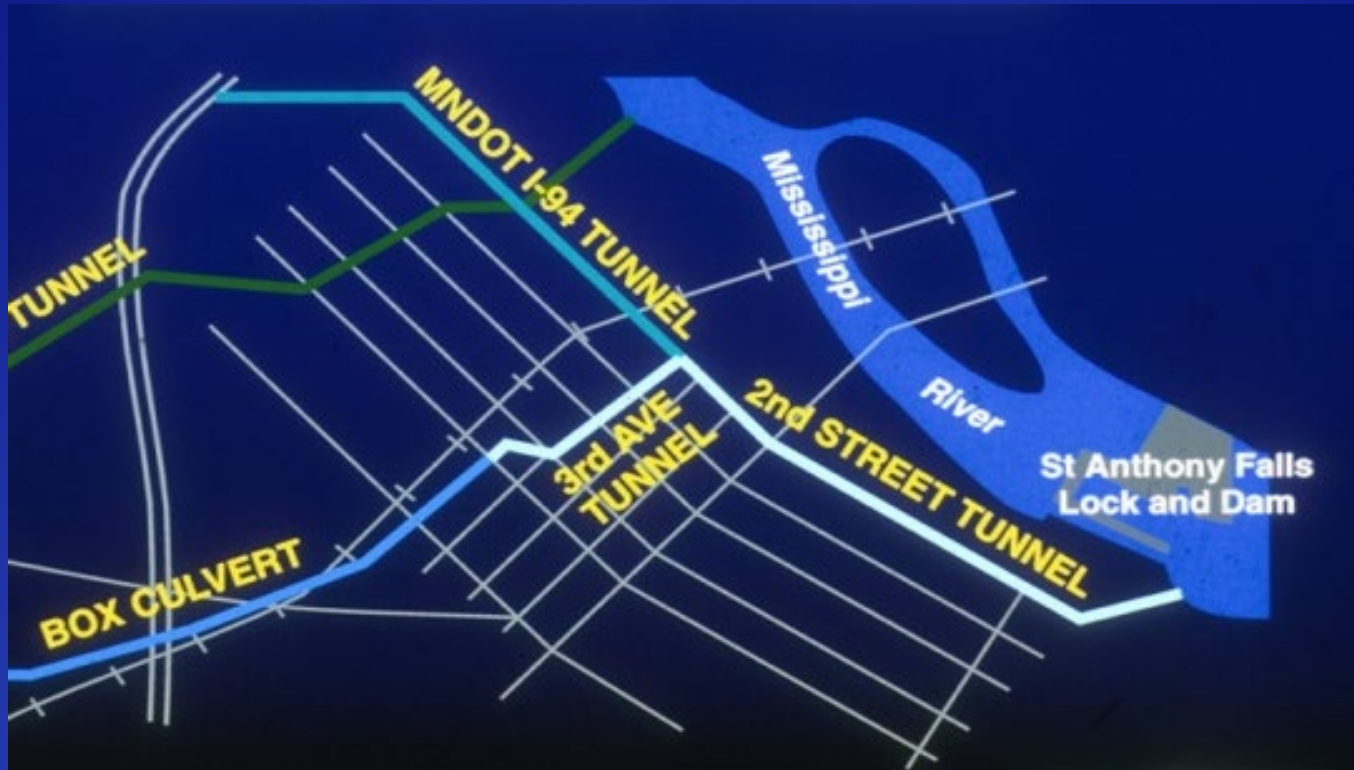


Second Street Tunnel
1978



Double Box Culvert 1992

Bassett Creek Tunnels



- Constructed 1976 - 1992
- \$80 million project (2019 dollars)
- 2.4 miles of tunnel with 35-foot drop structure
- 18 additional flood control structures throughout watershed
- Partnership: BCWMC and member cities, MnDNR, Army Corps of Engineers

Bassett Creek WMC

Annual Funding

- Operating budget ~ \$850,000
 - Contributions from 9 member cities
 - Development review fees
 - Grants
- Capital improvement program budget ~ \$2.3M
 - Tax levy through Hennepin Co (MN Stat. 103B.251)
 - Grants
 - Potential for maintenance levy

\$3.6M in grant funds since 2013

Past Accomplishments

- Flood Control Project construction, inspections, maintenance
- Routine monitoring of all priority waters since 1970
- Robust Capital Improvement Program since 2004
 - 2,455 lbs/year total phosphorus reduction
 - 661 tons/year suspended solids reduction
 - 6.4 miles of streambanks restored
 - 41.3 acre-feet of flood storage created
 - 2 lakes delisted for nutrients: Wirth Lake, Sweeney Lake
- Adoption of MIDS in 2015
- Robust hydrologic and hydraulic model
- Incorporation of Dakota creek name and creation of new watershed map

High Priority Issues

- Impaired waters
- Chloride pollution (winter deicers)
- Impact of climate change on hydrology, water levels, and flood risk
- Bassett Creek Valley flood risk reduction and stormwater management opportunities
- Organizational capacity and staffing
- BCWMC funding mechanisms
- Progress assessment

Impaired Lakes & Streams

- **Chloride**

- Crane Lake
- Parkers Lake
- Sweeney Lake
- Wirth Lake
- Bassett Creek
- Plymouth Creek

- **Biologic Integrity**

- Medicine Lake
- Bassett Creek
- Plymouth Creek

- **Nutrients**

- Lost Lake
- Medicine Lake
- Northwood Lake

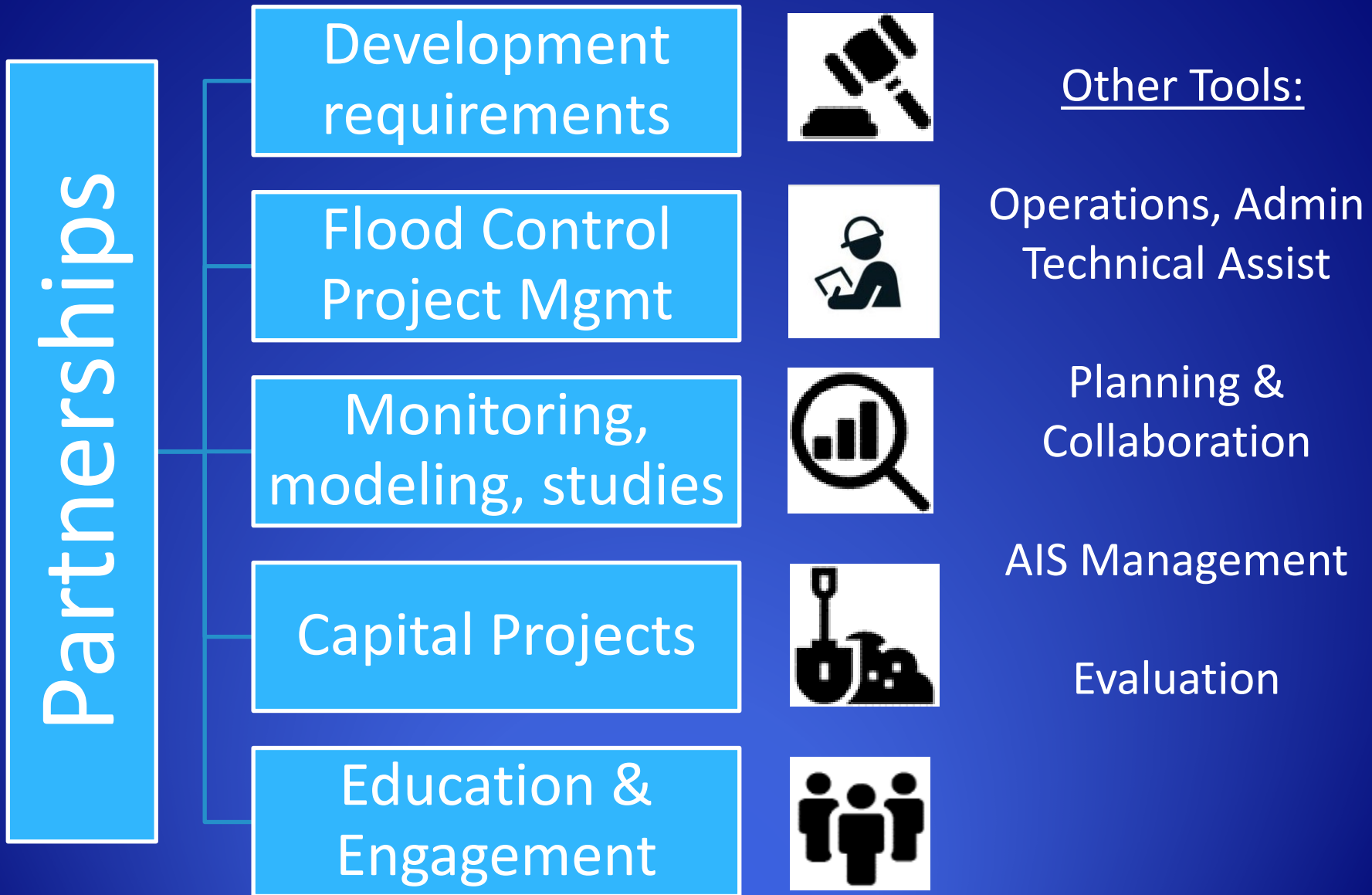
- **Bacteria**

- Bassett Creek
- North Branch Bassett Cr
- Plymouth Creek
- Sweeney Branch Bassett Cr

High Priority Goals

- Reduce chloride in Bassett Creek by 10%; statistically significant chloride reductions in all other at-risk or impaired lakes and streams
- Medicine Lake off impaired waters list for nutrients
- Statistically significant improvement in water quality in Lost and Northwood Lakes
- Improve/maintain water quality and ecology in all other lakes and streams
- Identify and reduce flood risk in vulnerable areas
- Study and enhance climate resiliency
- Collaborate on regional improvements in Bassett Creek Valley
- Assess organizational structure, staffing needs, and funding mechanisms; implement recommendations

Tools for Implementation



Key Implementation Activities

- Complete comprehensive assessment of organizational structure, staff capacity and funding mechanisms
- Implement findings from 2025 Medicine Lake TMDL Status Assessment Project
- Complete Lost and Northwood Lakes TMDLs
- Complete multiple studies to target future work including:
 - Subwatershed assessments
 - Flood & climate vulnerability risk assessment
 - Climate resiliency strategy framework
 - Chloride study and management plans
 - Shoreline and wetland inventories

Key Implementation Activities Con't....

- Facilitate partnerships for regional floodplain and stormwater management in Bassett Creek Valley
- Utilize updated development standards including requirements for winter maintenance plans
- Continue capital improvement program (36 projects/10 years)
- Implement tunnel maintenance projects & inspections
- Develop and utilize social vulnerability index; build relationships with diverse, underserved communities
- Incorporate Indigenous place names and land and water care practices, as appropriate
- Consider small cost share program for residents and partners

www.bassettcreekwmo.org

Laura Jester

BCWMC Administrator

laura.jester@keystonewaters.com

952-270-1990

